

# Velocity Scan: Programming and Usage

This is an addendum to the Inspection User’s Manual that illustrates the setup and use of a new feature, Velocity Scan.

## Concept

Previous wafer scanning methods were to specify individual inspection points, or point based point-scans where inspection points were arrayed in a linear fashion at a fixed interval. Then the Inspection software would step the stage from point to point, pausing at each site.

Velocity scan improves upon previous methods by driving from a starting point to an end point at a continuously variable speed without stopping at interim points.

## Programming

Programming a velocity scan is almost identical to programming a point-scan. The exception is that with a Velocity Scan there is no need to specify a “Step”, just a “Start” and an “End”.

While inspection Points and Point-scans are displayed with individual dots, Velocity Scans are represented by a pink line. See Figure 1, below.

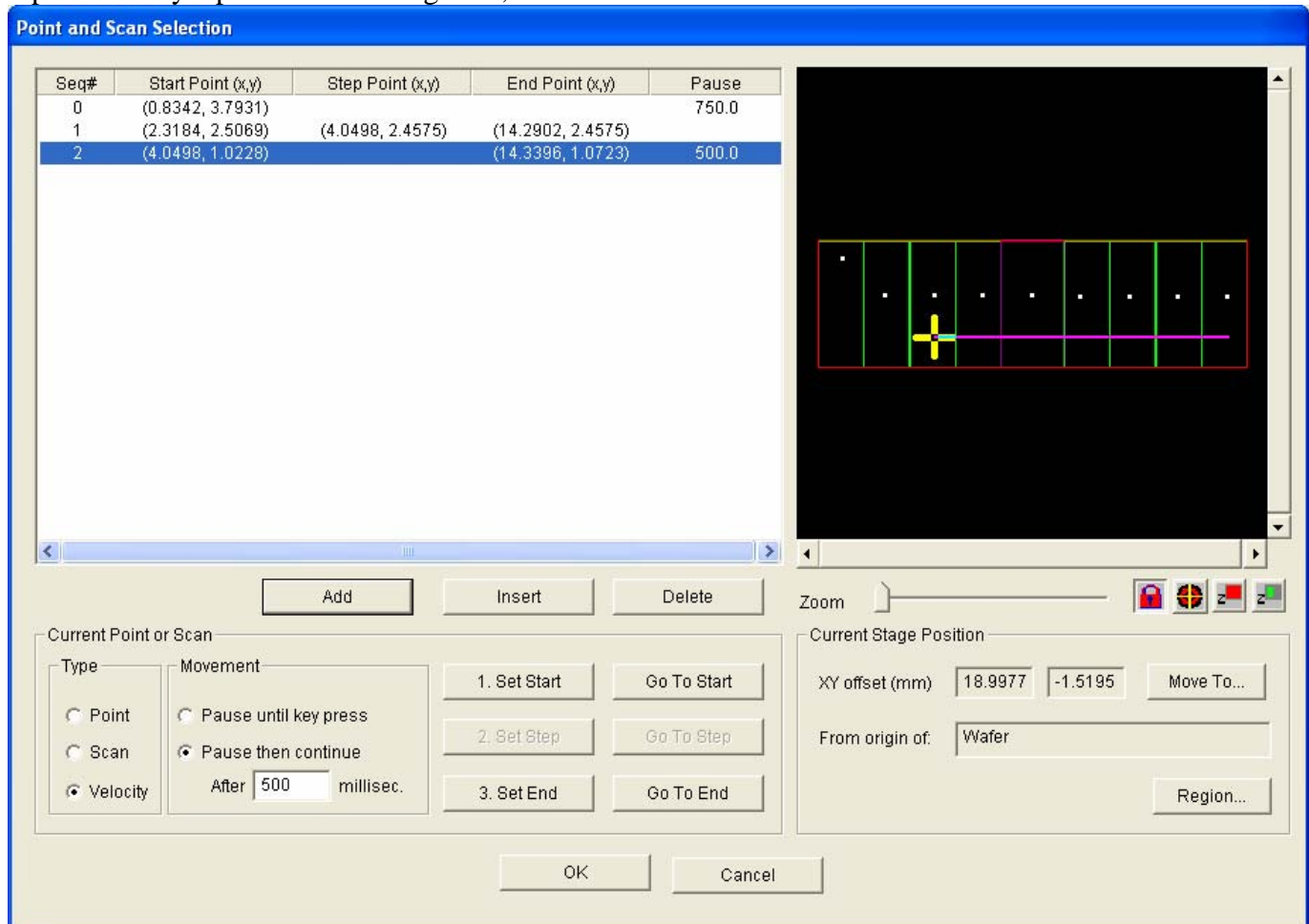
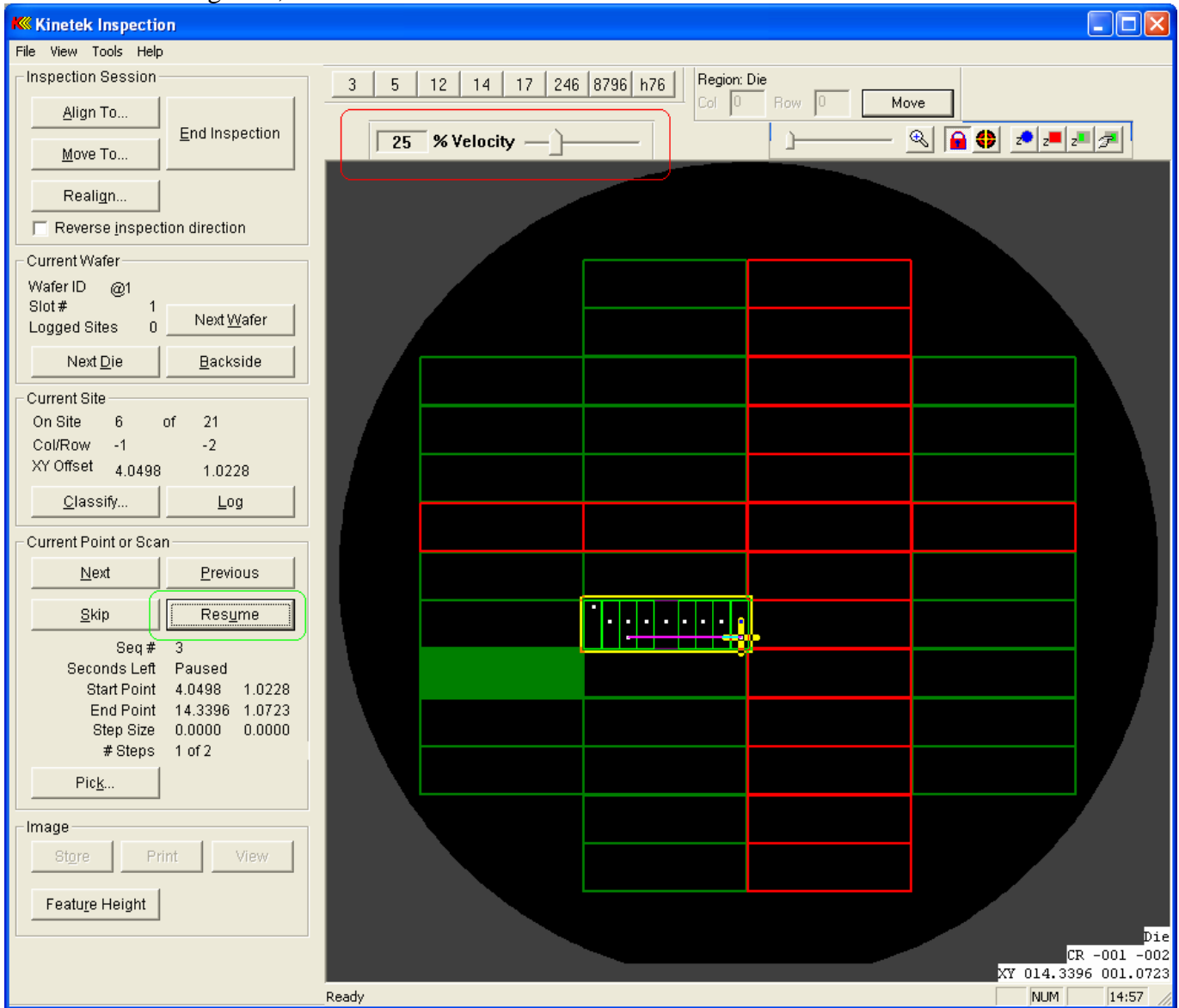


Figure 1

## Usage

During the Inspection process, there are two new features. The first feature is the Velocity Toolbar, circled in red in Figure 2, below.



**Figure 2**

To alter the velocity or scan rate, simply change the position of the slider control. Reflected in the text box to the left of the slider is the percentage between Min and Max velocities of the current setting.

The second new feature is that during a Velocity Scan, if the “Pause” button is depressed, it changes to become the “Resume” button. The functionality of this button is straightforward; Clicking “Pause” stops the scan and allows the operator to log a new site or scan around with the joystick, while clicking “Resume” resumes the scan from the current position.